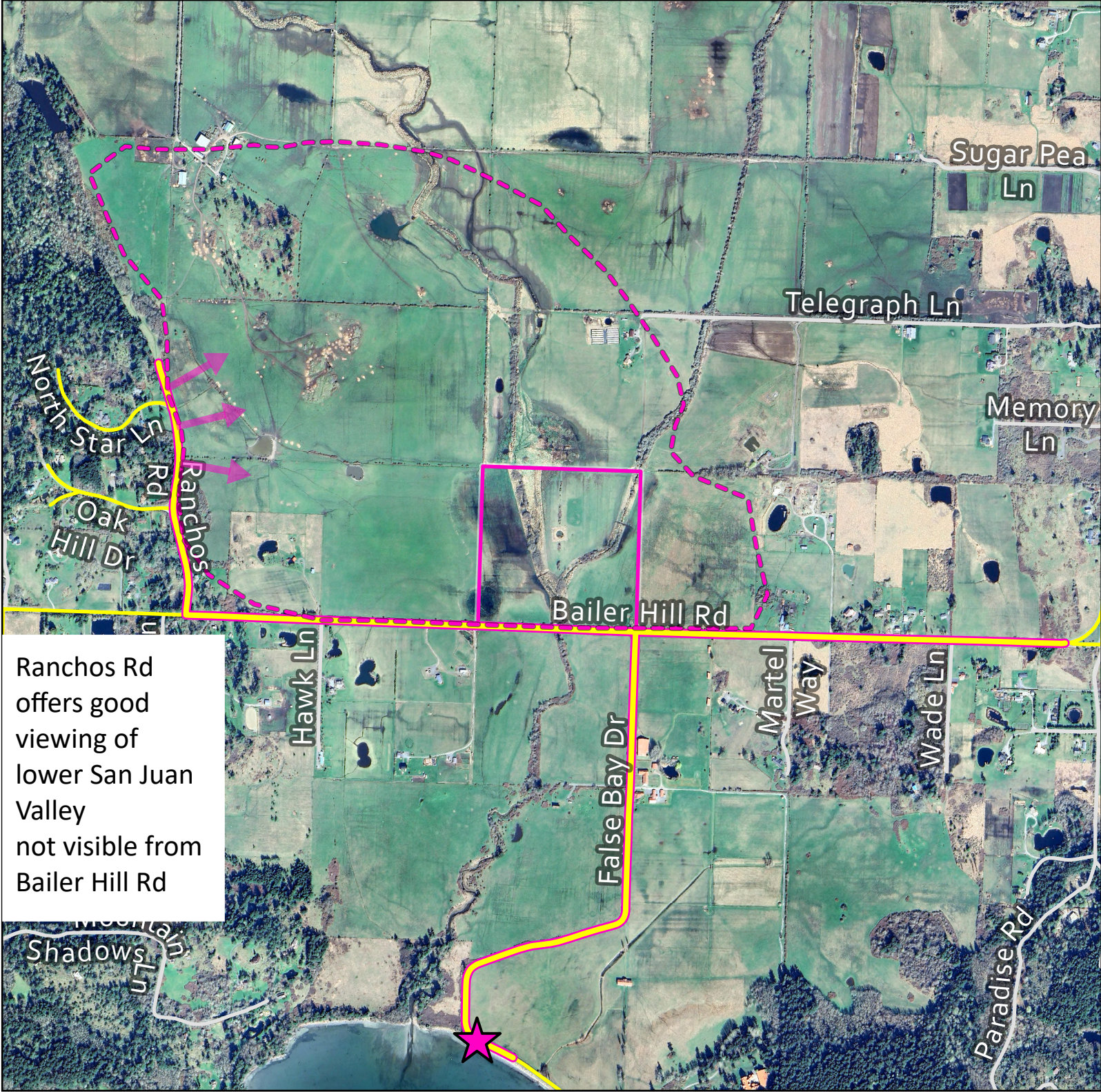


Swan Survey Area

False Bay Preserve, False Bay and Lower San Juan Valley.

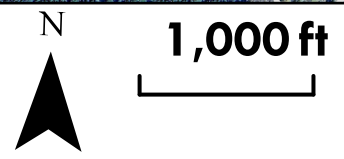
View from Bailer Hill Rd, Ranchos Rd, and False Bay Dr.



Ranchos Rd offers good viewing of lower San Juan Valley not visible from Bailer Hill Rd

- ★ Observation Point
- ▭ False Bay Preserve
- ⋯ Lower Valley Observation Area

- Route
- Private Roads
- Public Roads



March, 2024 Aerial from Google Earth and Airbus. Road data from San Juan County GIS Dept.