

the SAN JUAN
PRESERVATION
TRUST

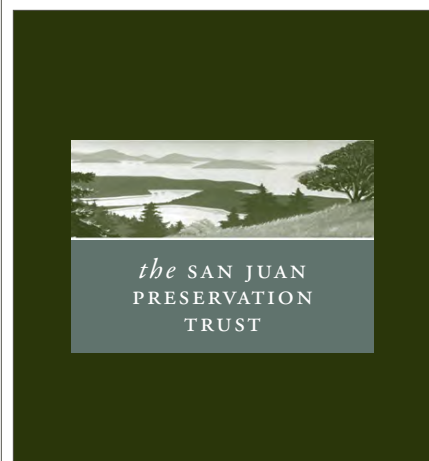
Box 327
Lopez Island, WA 98261
360.468.3202
www.sjpt.org

ADDRESS SERVICE REQUESTED

NON-PROFIT ORG.
US POSTAGE
PAID
LOPEZ ISLAND, WA
PERMIT NO. 3

IN THIS ISSUE:

- 29th Annual Report to Members
- 2007 Financial Summary
- 2007 Conservation Highlights
- Vote for New Trustees



the SAN JUAN
PRESERVATION
TRUST



Land & Legacy

SPRING 2008

WWW.SJPT.ORG

29TH ANNUAL REPORT TO MEMBERS 1,200 Acres, 2 Miles of Shoreline Protected in 2007

REMEMBER TURTLEBACK MOUNTAIN? Just over a year ago, we were celebrating a remarkable year with the protection of Turtleback Mountain on Orcas Island as our capstone. But we were also contemplating the future of the Preservation Trust. Battle-tested but anxious, we naturally asked in our last Annual Report: "So... What's Next?"

Thanks to the support of our membership, our volunteers, our conservation partners and some very generous island landowners, things turned out pretty well. As noted in our previous newsletter and illustrated in the map included with this report, we followed Turtleback with arguably the most successful year in the 29-year history of the Preservation Trust.

All told, we conserved over 1,200 acres on eight islands during the past year, including 23 conservation easements (a record), 600 acres of farmland and two miles of shoreline. We did this by leveraging \$742,500 of annual operating funds into more than \$9 million worth of conservation land and easements.

In other words, for every dollar we spent running the organization, we permanently conserved more than \$12 worth of land in the San Juan Islands.

Evidence suggests that this impressive return on investment can be attributed in large part to our education and stewardship efforts. From targeted landowner outreach, to the public success of our restoration projects (how 'bout them bluebirds!), to new efforts to introduce land conservation to future generations of islanders, we are seeing increased financial support, immeasurable goodwill within our island community, and tangible results on the land.

An independent financial audit once again concluded that our internal controls are in excellent health. Our Stewardship and Endowment funds, which are invested to sustain the long-term integrity of our work, have each reached the \$1 million mark. And our membership program, which has rebounded to record levels following Turtleback-induced donor fatigue, stands ready to benefit from our new database and staffing assignments.

The Preservation Trust enters its 30th year amidst uncertain economic times. But we nevertheless have a number of exciting projects in the pipeline, and we are revisiting our conservation plan to validate priorities, establish goals, and initiate projects and programs that directly reflect our members' long-term aspirations for these islands.

Turtleback Mountain may be a distant image in our rear-view mirror, but its lessons remain front and center: An effective organization, built to support the dreams of a generous and visionary community of people, is capable of moving mountains. Or at least saving them.



PHOTO BY: MARK GARDNER RAINSHADOW PHOTOGRAPHICS

BLUEBIRD NESTLINGS ON SAN JUAN ISLAND

The Western Bluebird Reintroduction Project has exciting news to report. So far this spring we have released eight pairs of Western bluebirds on San Juan Island, and four of these pairs have nested in San Juan Valley! As of early June, three of the four pairs have nestlings, while the fourth nest contains six eggs. By the time you read this, 24 juveniles, sporting the blue feathers that make these birds so striking, may be flying around San Juan Island. Four of the released pairs have yet to be located. If you see them, please call our Bluebird Hotline: 360-298-2822. To see more beautiful photos of our bluebirds, or for project information and updates, visit www.sjpt.org and click on the Western Bluebird Reintroduction Project button.

ALL SJPT MEMBERS AND FRIENDS ARE WARMLY INVITED TO

The San Juan Preservation Trust's First Annual SUMMER SOCIAL

A CELEBRATION OF ART, ISLANDS, AND CONSERVATION
IN COLLABORATION WITH THE ARTISTS OF PLEIN AIR WASHINGTON
AND GALLERY SAN JUAN

Saturday, August 2, 2:00-5:00pm
Outdoors on Red Mill Farm, San Juan Island

Annual Meeting * On-Site Plein Air Painting * Art Show and Auction
(featuring artwork capturing the San Juan Islands and SJPT protected properties)
Children's Activities * Music by Kubatana Marimba * Fresh local food and wine
Free shuttle between event and Friday Harbor ferry terminal

FOR MORE INFORMATION CONTACT SJPT AT (360) 468-3202 OR VISIT WWW.SJPT.ORG

\$15 SUGGESTED DONATION



SAVE THE DATE!

8/2/08

PRINTED ON 100% POST-CONSUMER RECYCLED PAPER



Land & Legacy

SPRING 2008

WWW.SJPT.ORG

MEMBERS VOTE FOR BOARD OF TRUSTEES

The San Juan Preservation Trust is governed by a volunteer board of trustees representing islands throughout the archipelago. Each year our members have the opportunity to vote for new or incumbent trustees. This year's nominating committee is pleased to submit the following slate of candidates. Please read the profiles of the new candidates (incumbent candidate profiles are online at www.sjpt.org/about/people), complete the ballot, and mail it back to us. Thank you for participating.

2008 TRUSTEE CANDIDATES

- Lopez:* Charles Givens*
- Orcas:* Margaret Carper
Steve McKeon*
Mary Riveland*
- San Juan:* Roger deRoos*
Carolyn Haugen
Brian Windrope
- Shaw:* Fred Ellis*
Samantha Martin Sprenger

* Incumbent candidate

2008 TRUSTEE MAIL-IN BALLOT

MEMBER #1

___ All candidates

___ Withhold vote for _____

MEMBER #2

___ All candidates

___ Withhold vote for _____

Signature _____ Date _____

Signature _____ Date _____

PROFILES FOR NEW TRUSTEE CANDIDATES

MARGARET CARPER (Orcas Island) Margaret Carper, along with her husband, Dan, lives on and cares for a beautiful property bordering the waters of East Sound. Now retired, Margaret worked at Memorial-Sloan Kettering Cancer Center in New York City as a hospital administrative manager and liaison officer. Along with her love of the islands, she will bring her extensive administrative and people skills to the work of the Trust. Her previous non-profit experience includes having served for four years on the board of the Boys Hope/Girls Hope of New York City. She says "we should do all we can to preserve the natural, unspoiled beauty of these islands for future generations to enjoy."

CAROLYN HAUGEN (San Juan Island) Carolyn Haugen earned her bachelor's and master's degrees from Stanford University and a doctorate in education from the University of Southern California. She has spent her professional lifetime as a classroom teacher and as a principal. Today she serves as Shaw Island's principal and superintendent. She has served on many non-profit boards, including the San Juan Community Theatre, the San Juan Nature Institute and the San Juan Island Community Foundation. Carolyn says she is "in awe of our islands and the move here 10 years ago has been life-renewing." She says that we must be stewards and caretakers of our islands and model this through action and education.

SAMANTHA MARTIN SPRENGER (Shaw Island) Samantha Martin Sprenger has a deep connection to Shaw Island and to the Waldron Island community where her husband, Carson, grew up, and where his family continues to own property. Their son, Otto, just celebrated his first birthday. She has worked on two organic farms on Waldron and is involved in a Garry oak restoration project there. Samantha earned a bachelor's degree in environmental science and resource management at the University of Washington's College of Forest Resources, and is completing her master's in forest soils and restoration ecology at UW. As a terrestrial ecologist, Samantha says "as the population of San Juan County continues to grow, smart ecologically minded conservation has become increasingly important to protect natural resources and biodiversity." She also feels that ongoing, active stewardship is a crucial element in conserving the ecological integrity of the land.

BRIAN WINDROPE (San Juan Island) Brian Windrope earned bachelor's degrees in anthropology and zoology from UC Berkeley and a master's in education from Stanford University. He has coupled a lifetime of avid wilderness exploration with work as a science educator and non-profit administrator, including executive director of the Opal Creek Ancient Forest Center in Oregon; director of a residential science and astronomy school for Guided Discoveries in California; and director of education and outreach for Yosemite National Institutes. He taught middle and high school biology and physical science and enjoyed several years of teaching environmental science for Yosemite Institute and Headlands Institute. Brian and his wife, Amy, have two young sons - Elliott and Owen. Brian says, "My experiences have provided me with insight into the fragile status of ecological systems and I am determined to do whatever I can to help pause and heal the damage being done."

BOARD ASKS CYNTHIA DILLING TO SERVE With two of the four Lopez Island-dedicated trustee positions presently unoccupied, our board of trustees invited Cynthia Dilling to, once again, bring her expertise back to the board for a one-year term. Cynthia served as a trustee in the early 1980s and since then has been active on the boards of the Lopez Island Historical Society and the Lopez Farmer's Market. She moved to Lopez in 1976 and has worked on many conservation projects over the years including the Lopez Comprehensive Plan, Shark Reef, the Chadwick Point Colville Preserve, Iceberg Point and most recently, the Watmough Bight Campaign. A small business owner, Cynthia is a conservation easement donor and says she is passionate about land preservation in the San Juans. She brings with her a proven land conservation ethic, a familiarity with the islands and their challenges, and a rich web of personal connections on Lopez.

ABBREVIATED STATEMENTS OF FINANCIAL POSITION As of December 31 (in thousands)

	2007	2006
ASSETS		
Cash	\$ 254	\$ 200
Pledges & other receivables	1,040	797
Investments	8,538	5,602
Conservation land	10,159	9,007
Other	52	27
TOTAL ASSETS	20,043	15,633
LIABILITIES		
	29	33
NET ASSETS	20,014	15,599
TOTAL LIABILITIES AND NET ASSETS	\$ 20,043	\$ 15,633

ABBREVIATED SUMMARY OF ACTIVITIES For the years ended December 31 (in thousands)

	2007	2006
SUPPORT AND REVENUE		
General contributions, grants, fees, & other	\$ 487	\$ 370
Bequests (for unrestricted purposes)	\$ 834	
Gifts of land	750	
Investment income		
Interest and dividend income	239	204
Net realized gains (losses) on investments	72	83
Restricted contributions for land acquisition, stewardship, endowment and other	4,653	8,428
	7,033	9,085
Net unrealized gains (losses) on investments	127	189
TOTAL SUPPORT AND REVENUE	7,160	9,274
EXPENSES AND ACQUISITIONS		
Conservation programs	602	502
Administration and fundraising	144	143
TOTAL EXPENSES	746	645
Conservation easement acquisitions	2,000	7,124
TOTAL EXPENSES AND ACQUISITIONS	2,746	7,769
NET RESULT	\$ 4,414	\$ 1,505

These abbreviated financial statements are derived from the fully annotated financial statements submitted to the board of trustees. The financial statements for 2006 were audited by Sanders & Sanders, CPA, in whose opinion they "present fairly, in all material respects, the financial position of the San Juan Preservation Trust as of December 31, 2006." The financial statements for 2007 will be audited later this year.

1 SKARTVEDT-HURST FAMILY PROPERTY (Stuart)



Conservation easement donation

Acres: 11
Shoreline (390 ft), scenic hillside, forest, grasslands

2 FRANCIS FAMILY PROPERTY (San Juan)



Conservation easement donation

Acres: 40
Forest

3 deROOS FAMILY PROPERTY (San Juan)



Conservation easement donation

Acres: 43
Shoreline (1,234 ft), forest

4 COPELAND FAMILY PROPERTY (Shaw)



Conservation easement donation

Acres: 18
Wetlands and forest

5 EVELYN LEATHAM PROPERTY (Lopez)



Conservation easement donation

Acres: 6
Shoreline (319 ft.), forest

6 MOTTOLA FAMILY PROPERTY (Lopez)



Conservation easement donation

Acres: 11
Wetlands, forest

9 CYNTHIA DILLING and GEORGE LAWSON PROPERTIES (Lopez)



Conservation easement donations

Acres: 33
Shoreline (580 ft), farmland, forest.
Neighbors working together to protect shared resource.

10 HANSON FAMILY PROPERTY "HANSON MARSH" (Orcas)



Conservation easement donation

Acres: 48
Marsh with waterfowl nesting habitat, forest

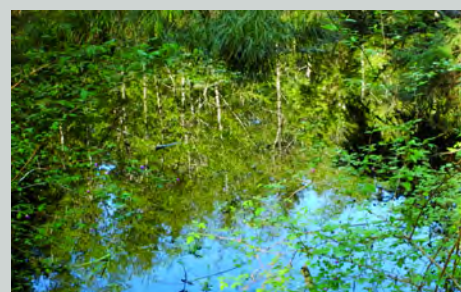
12 JESTER FAMILY PROPERTY (Orcas)



Conservation easement donation

Acres: 31
Scenic hillside, wetland, forest, adjacent to other protected lands including Moran State Park.

13 EAGLE LAKE PARTNERSHIP PROPERTY (Orcas)



Conservation easement donation

Acres: 46
Forest and lakefront, adjacent to Moran State Park

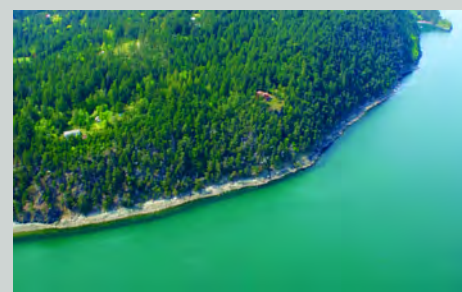
14 BAKER MOUNTAIN RANCH (Lummi)



Conservation easements (purchased)

Acres: 362
Shoreline (6,450 ft), working farm and forest, wetlands, scenic hillsides. Partners included Lummi Island Heritage Trust (lead partner) and Washington State Department of Fish & Wildlife.

15 WINKLER and GRIMM FAMILY PROPERTIES (Guemes)



Conservation easement donations

Acres: 14
Shoreline (415 ft.), forest. Neighbors working together to protect shared resource.

16 DEMOPOULOS MARSH / PEACH BEACH PRESERVE (Guemes)

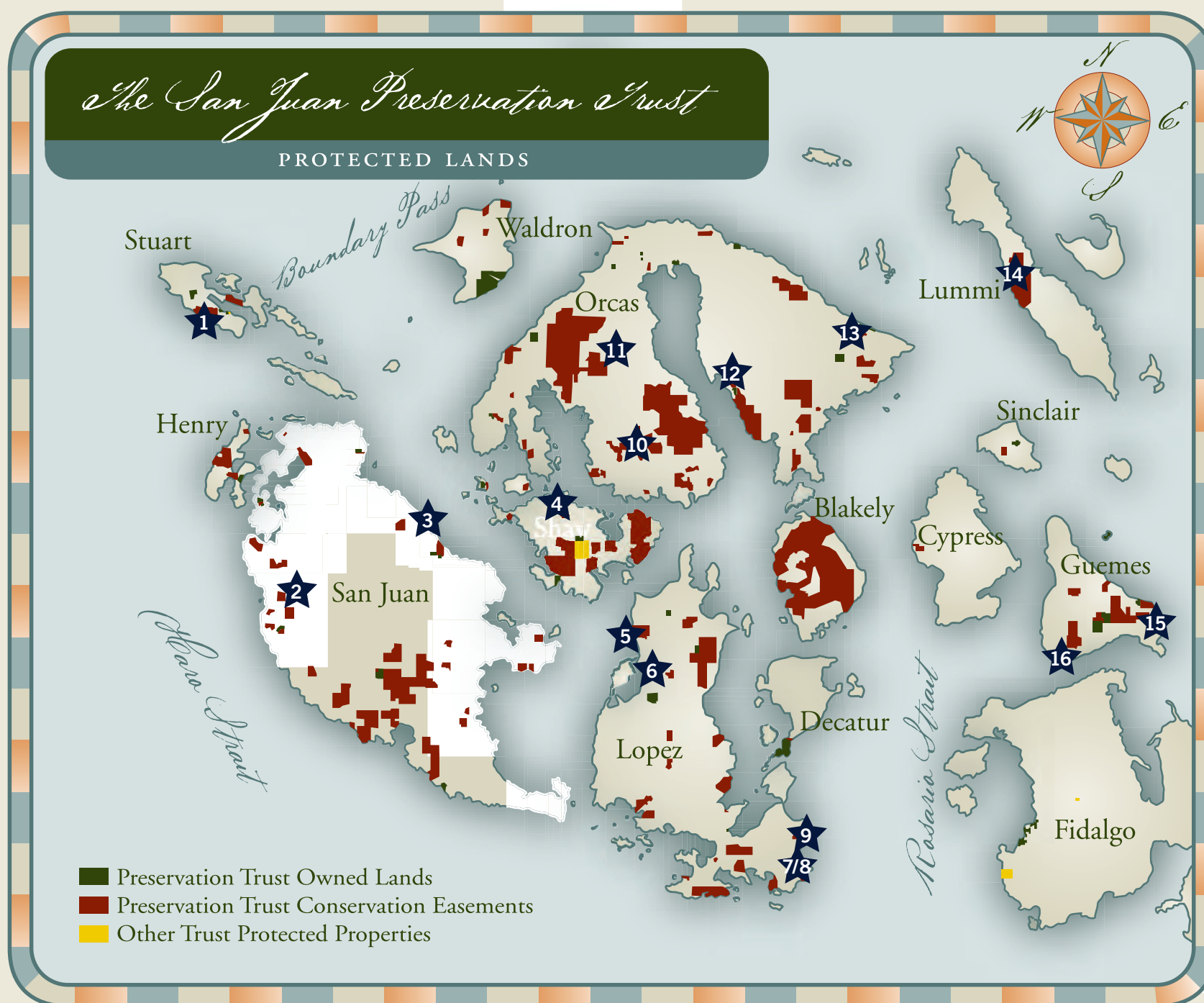


Fee interest (purchased)

Acres: 21
Shoreline, grassland, wetland and forest. Undivided interest purchased and integrated into pre-existing SJPT preserve.

CONSERVATION HIGHLIGHTS FROM OUR 29TH YEAR

In addition to the properties profiled here, the Preservation Trust received six anonymous donations that conserve 474 acres (including over 400 acres of working farmland) and 5,480 feet of shoreline on five islands.



ALL PHOTOS BY KURT THORSON EXCEPT DERODS (WASHINGTON STATE DEPARTMENT OF ECOLOGY), FRANCIS (SVEN HAARHOFF), WATMOUGH (STEVE HORN), COPELAND (DEAN DOUGHERTY) AND DEMOPOULOS (FERDI BUSINGER).
SPECIAL THANKS TO PILOT JOHN GEYMAN AND THE SAN JUAN PILOTS ASSOCIATION.

7 WATMOUGH BIGHT PRESERVE (Lopez)



Conservation easement (purchased)

Acres: 7
Shoreline (720 ft.), forest, public access. Partners included San Juan County Land Bank and the Lopez Island community.

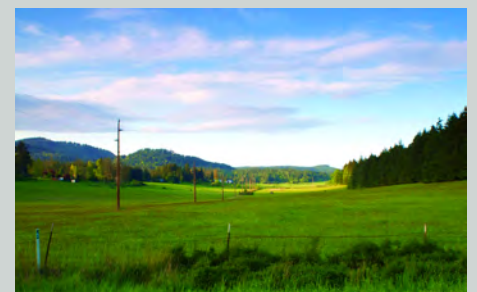
8 TEX GIELING PROPERTY (Lopez)

Conservation easement donation

Acres: 4
Shoreline (368 ft), part of new Watmough Bight preserve



11 TAYLOR FAMILY PROPERTY (Orcas)



Conservation easement donation

Acres: 77
Scenic farmland and forest