

ADDRESS SERVICE REQUESTED

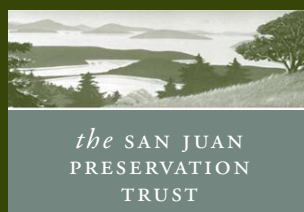
NON-PROFIT ORG.  
US POSTAGE  
PAID  
LOPEZ ISLAND, WA  
PERMIT NO. 3

Box 327  
Lopez Island, WA 98261  
360.468.3202  
www.sjpt.org

2007 PRESERVATION TRUST  
MEMBERSHIP OUTINGS

April 7 Lopez Island Wildflower Walk  
April 21 Turtleback Mountain Wildflower Walk  
July 7 "Hidden Turtleback" Hike  
(strenuous, all-day event)

To reserve your spot, please call us at 360.468.3202.  
These events are very popular, so make your reservations soon!



# Land & Legacy

## 28TH ANNUAL REPORT TO MEMBERS *A Remarkable Year*

"SO ... WHAT'S NEXT?"

As you might imagine, we've been hearing that a lot lately. Turtleback is a tough act to follow: a mystical property, a hefty price tag, a short deadline, and an expectant community. Thanks to over 2,000 donors (you're probably one of them), hundreds of volunteers, and a league of dedicated professionals, we raised \$18.5 million in six months and opened the mountain to the public. Turtleback now belongs to all of us.

But as the other projects we profile in this report attest, Turtleback was just one of many accomplishments that made this a remarkable year. With several more important projects still in the pipeline, we stand by our conviction that private land conservation is the key to permanently protecting the beauty and natural integrity of our islands.

Capitalizing on this momentum, we are actively encouraging private landowners to take direct responsibility for the health and future of these islands. We are assessing and enhancing wildlife habitat on private land, including a re-introduction of the Western bluebird. To welcome and inspire new landowners, we will soon release our book "A Place in the Islands: How Private Land Owners Shape the Future of the San Juan and Gulf Islands." Our volunteer program continues to create a legion of passionate advocates within the community. And, for the first time, we are collaborating with local educators to get our kids out on the land.

An annual independent financial audit once again validated our processes. While general membership support dropped more than 22 percent from the previous year, we hope that this turns out to be a temporary decrease caused by the distractions of the Turtleback campaign. Nevertheless, we will be placing special emphasis over the coming year on strengthening our membership program.

The success of Turtleback has pushed us into exciting territory. New partnerships are forming with conservationists who are eager to build upon the momentum we've created. Appreciation for our work has motivated a new vein of island landowners to contact us to discuss conservation options for their land. Perhaps most gratifying of all is the optimism that Turtleback has engendered among our loyal supporters.

So... what's next? There is much more to do on behalf of the future of these islands, but with your continuing support, everything seems possible.

The San Juan Preservation Trust has permanently protected over 12,000 acres and 26 miles of shoreline, more than any other individual, group or government agency in the San Juan Islands. Managed as private nature preserves and public parks, these protected lands include 182 conservation easements and 39 Trust-owned properties on 18 islands.



Preservation Trust member Chris Baker (San Francisco, CA) won grand prize in the Preservation Trust's 2006 Amateur Photo Contest with this shot of Yellow Island and Turtleback Mountain.



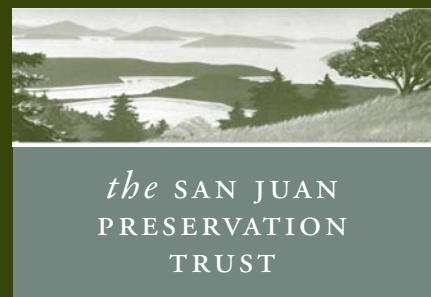
LYNN WEBER-ROOCHVARG

### PHOTO CONTEST WINNERS

The San Juan Preservation Trust held its first amateur photo contest this past year. We were pleased and impressed by the wonderful photos submitted by members. Thanks to all of you for capturing the beauty of our islands with your lenses. While it was difficult to narrow down the entries, the following islanders' photos were chosen as staff favorites:

- Chris Baker (Grand Prize winner)
- Sharon Baskind
- Ruth Beck
- Jack and Sherry Bell
- Linda Hudson
- Dave Marshak
- Lynn Weber-Roochvarg
- Shayne Vinagre

See all the winning entries at [www.sjpt.org/gallery/contest](http://www.sjpt.org/gallery/contest).



# Land & Legacy

SPRING 2007

[WWW.SJPT.ORG](http://WWW.SJPT.ORG)

### 2007 TRUSTEE CANDIDATES

- Fidalgo:** Rick Machin\*
- Lopez:** David Black\*  
David Perera
- Orcas:** Alan Davidson\*
- San Juan:** Karin Agosta\*  
Charles Bodenstab\*
- Waldron:** Judy Wilgress\*

\* Incumbent candidate

### 2007 TRUSTEE MAIL-IN BALLOT

#### VOTER #1

All candidates  
 Withhold vote for \_\_\_\_\_

Signature \_\_\_\_\_ Date \_\_\_\_\_

#### VOTER #2

All candidates  
 Withhold vote for \_\_\_\_\_

Signature \_\_\_\_\_ Date \_\_\_\_\_

**NEW TRUSTEE CANDIDATE: DAVID PERERA**  
David Perera of Lopez Island has been a Preservation Trust volunteer since 1990. In 2005, he and his wife, Cherill, were selected as our Volunteers of the Year. David has twice served as a member of the board nominating committee. In addition to supporting the Lopez Lions Club, David has served as president and vice president of both the Davis Head Homeowners Association board and the board of the Lopez Island Medical Clinic. During his 30 years as a physician with Group Health, David served in a variety of management and leadership positions. He is a clinical professor of medicine at The University of Washington, and has experience in medical research, teaching, and personnel and budget management. Profiles of incumbent trustee candidates are available at [www.sjpt.org/about/people](http://www.sjpt.org/about/people).

### MEMBERS VOTE FOR BOARD OF TRUSTEES

This year's nominating committee includes trustees Jonathan White (Orcas Island) chair, Sara Longworth (Fidalgo Island), Judie Wilgress (Waldron Island), and members Rachel Adams and Carolyn Haugen. The committee is pleased to submit the candidates named in the ballot on the left to our members. Please complete the ballot and mail it back to us at P.O. Box 327, Lopez Island, WA 98261.

### 28TH ANNUAL MEETING MAY 12, 2007 - FRIDAY HARBOR

YOU ARE CORDIALLY INVITED to the 28th annual meeting of the San Juan Preservation Trust. Lunch will be served after the meeting. Following lunch, a boat will depart the Port of Friday Harbor for a conservation cruise to Stuart Island. Seating for both the annual meeting and the cruise is limited, and reservations for both are being accepted on a first-come, first-served basis (see below for details).

**Meeting Place:** San Juan Island Yacht Club, 273 Front Street, Friday Harbor, WA. Located just above the Port of Friday Harbor marina, the Yacht Club is a five-minute walk from the San Juan Island ferry landing.

#### Meeting Agenda

- Welcome and introductions (begins at 10:00 a.m.)
- Brief reports (conservation successes and program activities)
- Lunch (12:00 noon to 1:30 p.m.)
- Stuart Island Conservation Cruise (1:30 p.m. to 3:50 p.m.)

The Preservation Trust has a long history of conservation on Stuart Island. Working with Stuart neighbors in 2006, we raised the funds required to purchase a 4-acre waterfront parcel and fold it into to our Reid Harbor nature preserve system. The cruise will circumnavigate Stuart Island and naturalists will be on board to interpret the natural and cultural features encountered along the way.

*Note: Lunch and the Stuart Island cruise have been scheduled to accommodate ferry travel to and from all islands.*

#### Lunch & Stuart Island Conservation Cruise Reservations

Please reserve \_\_\_\_\_ lunch(es) and seat(s) for the annual meeting.

Please reserve \_\_\_\_\_ place(s) aboard ship for the Stuart Island conservation cruise.

Guest name(s): \_\_\_\_\_

Enclosed is \$15 per person to cover lunch costs.

I would like \_\_\_\_\_ vegetarian lunch(es).

Enclosed is \$50 per person to cover costs for the Stuart Island conservation cruise.

Total enclosed: \$ \_\_\_\_\_

Please detach (or copy) and mail to:  
Annual Meeting, San Juan Preservation Trust, Box 327, Lopez Island, WA 98261 OR call 360.468.3202 to make reservations.

RESERVATION DEADLINE:  
Friday, May 4, 2007

### ABBREVIATED STATEMENTS OF FINANCIAL POSITION *As of December 31 (in thousands)*

	2006	2005
<b>ASSETS</b>		
Cash	\$ 200	\$ 267
Pledges & other receivables	895	194
Investments	5,568	5,078
Conservation land	9,007	8,571
Other	27	13
<b>TOTAL ASSETS</b>	<b>15,697</b>	<b>14,123</b>
<b>LIABILITIES</b>	<b>18</b>	<b>19</b>
<b>NET ASSETS</b>	<b>15,679</b>	<b>14,104</b>
<b>TOTAL LIABILITIES AND NET ASSETS</b>	<b>\$ 15,697</b>	<b>\$ 14,123</b>

### ABBREVIATED SUMMARY OF ACTIVITIES *For the years ended December 31 (in thousands)*

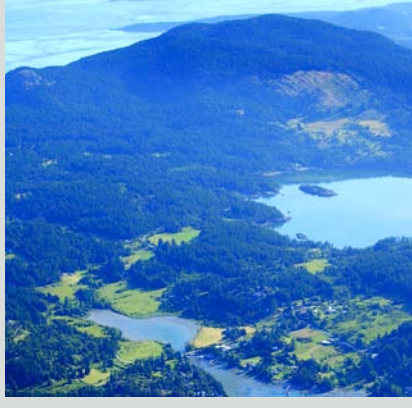
	2006	2005
<b>SUPPORT AND REVENUE</b>		
General contributions, grants, fees, & other	\$ 369	\$ 398
Gifts of land	0	280
Investment income		
Interest and dividend income	190	127
Net realized gains (losses) on investments	83	20
Restricted contributions for land acquisition, stewardship, endowment and other	8,500	1,216
	9,142	2,041
<b>Net unrealized gains (losses) on investments</b>	<b>190</b>	<b>(32)</b>
<b>TOTAL SUPPORT AND REVENUE</b>	<b>9,332</b>	<b>2,009</b>
<b>EXPENSES AND ACQUISITIONS</b>		
Conservation programs	503	388
Administration and fundraising	130	114
<b>TOTAL EXPENSES</b>	<b>633</b>	<b>502</b>
<b>Land and conservation easement acquisitions</b>	<b>7,124</b>	<b>879</b>
<b>TOTAL EXPENSES AND ACQUISITIONS</b>	<b>7,756</b>	<b>1,380</b>
<b>NET RESULT</b>	<b>\$ 1,576</b>	<b>\$ 628</b>

These abbreviated financial statements are derived from the fully annotated financial statements submitted to the board of trustees. The financial statements for 2005 were audited by Sanders & Sanders, CPA, in whose opinion they "present fairly, in all material respects, the financial position of the San Juan Preservation Trust as of December 31, 2005." The financial statements for 2006 will be audited later this year.

PRINTED ON 100% POST-CONSUMER RECYCLED PAPER



**1** TURTLEBACK MOUNTAIN (*Orcas*)



Turtleback Mountain, long considered the single most important and vulnerable conservation property in the San Juan archipelago, was the subject of the most ambitious campaign ever undertaken by the Preservation Trust. This \$18.5 million acquisition also represented the largest fundraising effort in the history of San Juan County, with more than 2,000 donors from throughout the Puget Sound region (and beyond) responding to our appeal.

The San Juan County Land Bank will manage the property, while the Preservation Trust will enforce a conservation easement that forever ensures that Turtleback Mountain remains an undeveloped conservation area that is accessible to the public.

Acres: 1,576  
Shoreline: 956 feet  
Residences allowed: 0

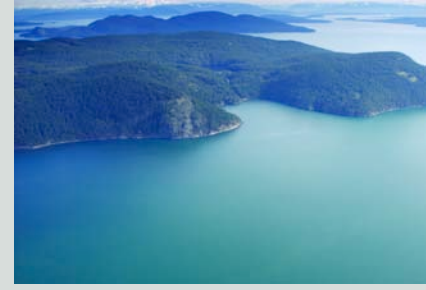
**2** HELSELL PROPERTY (*Orcas*)



Located near the Preservation Trust's Turtlehead Preserve, the Helsell property hosts a sprawling native forest rising from the western shores of Orcas Island. It is unusual to discover such an immense and largely untouched landscape on a popular island; the Helsell family donated a conservation easement on their forestland to ensure it retains its aesthetic and ecological value. The Helsell property has provided timber for a family-operated sawmill for many years, and this conservation easement allows selective logging to maintain this important economic activity.

Acres: 97  
Shoreline: 1,834 feet  
Residences allowed: 0

**3** BALD BLUFF (*Blakely*)

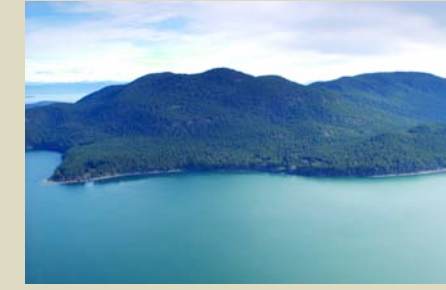


A dramatic rocky landscape of oak grasslands and coniferous forest, Bald Bluff towers over ferry traffic between Blakely and Lopez

Islands. Tom and Christine Crowley donated a conservation easement on this spectacular 60-acre property to ensure that it will forever remain in its natural state. Surrounded by over 2,200 acres of Blakely land previously protected by the Crowley family and the Preservation Trust, this conservation easement allows low-impact scientific research by Seattle Pacific University's Blakely Island Field Station.

Acres: 60  
Shoreline: 3,279 feet  
Residences allowed: 0

**4** BROWN STEWART PROPERTY (*Cypress*)



Fighting the final stages of cancer, Sarah Brown Stewart contacted the Preservation Trust to help her ensure that her family's land

was permanently protected from future development. Adjacent to the 4,700-acre Washington State Department of Natural Resources' Cypress Island Natural Resources Conservation Area, this property provides wildlife with shoreline access from the landlocked state preserve. Working swiftly with Sarah and her mother, Winifred Brown, the Preservation Trust drafted a conservation easement for the property that prohibits future development while preserving this important wildlife corridor.

Acres: 6  
Shoreline: 265 feet  
Residences allowed: 1 (existing)

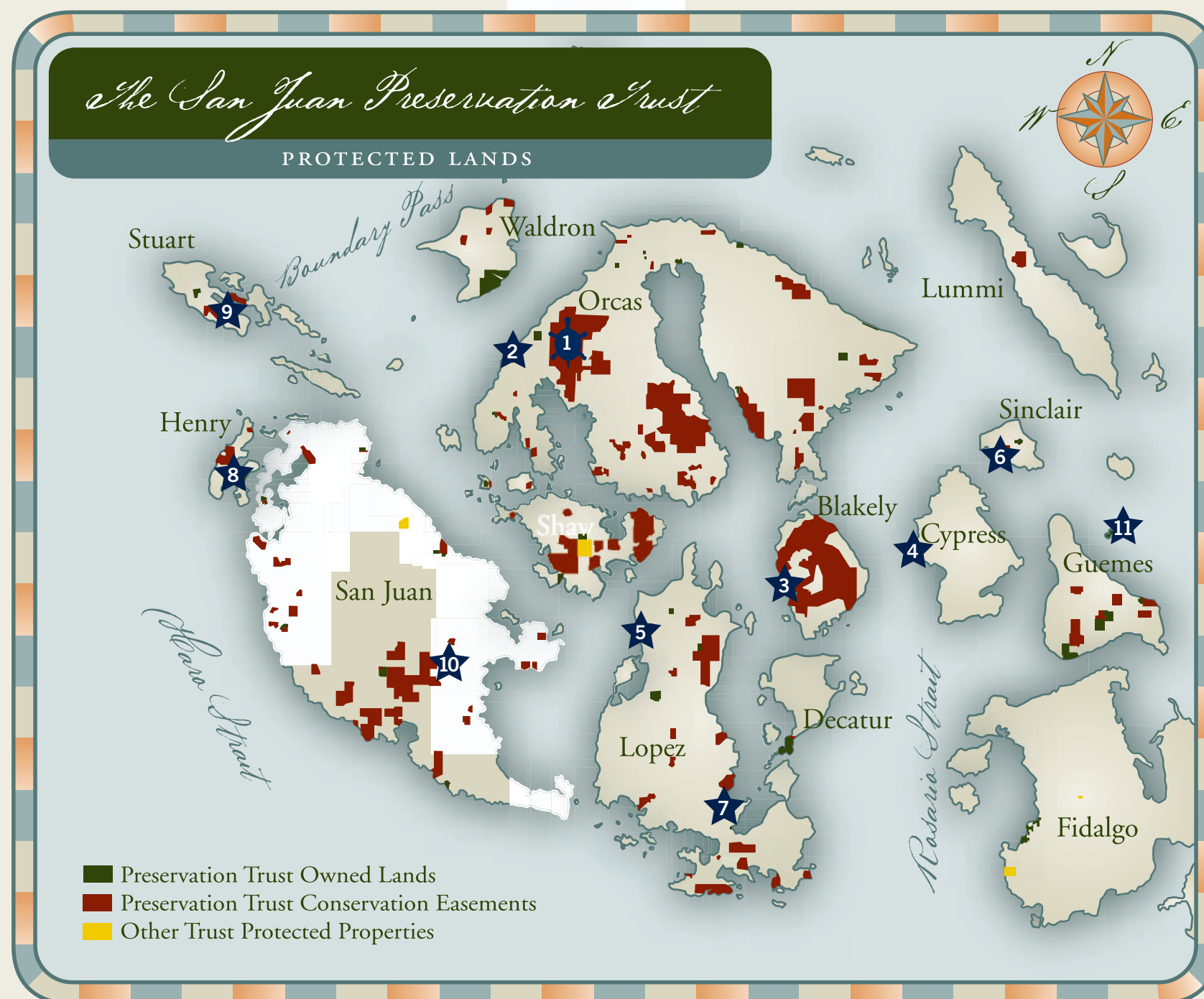
## CONSERVATION HIGHLIGHTS FROM OUR 28TH YEAR

**5** MCDERMOTT PROPERTY (*Lopez*)



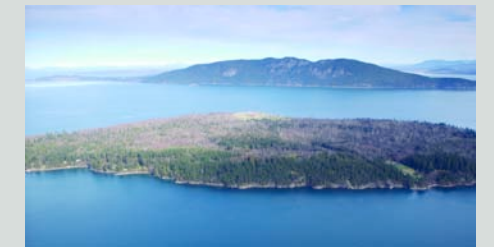
This conservation easement, donated by the McDermott family, protects a narrow strip of native forest immediately adjacent to the McDermott's 40-acre farm (which is also protected by a conservation easement held by the Preservation Trust). While small in size, this forest provides important edge habitat that protects native wildlife seeking shelter from exposure in the nearby open pastures. These trees will also serve as a natural buffer between the preserved agricultural land and a proposed high-density housing development.

Acres: 1  
Shoreline: 0  
Residences allowed: 0



ALL PHOTOS BY KURT THORSON EXCEPT MCDERMOTT (STEVE HORN), O'NEAL (DEBRA CLAUSEN) AND HENRY ISLAND ISTHMUS (DEAN DOUGHERTY).  
SPECIAL THANKS TO PILOT JOHN GEYMAN AND THE SAN JUAN PILOTS ASSOCIATION.

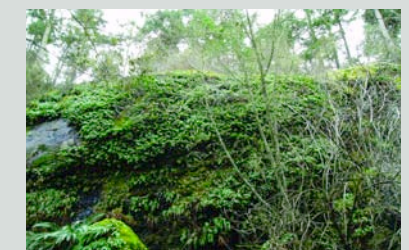
**6** BUSINGER KOOIMAN PROPERTY (*Sinclair*)



This 20-acre parcel in the heart of Sinclair Island contains mature native forest, diverse understory, and forested wetland habitats. The conservation easement, donated to the Preservation Trust by Marianne Kooiman and Joost Businger, ensures that the property remains forever undeveloped while permitting limited forestry activities.

Acres: 20  
Shoreline: 0  
Residences allowed: 0

**7** O'NEAL PROPERTY (*Lopez*)



This property is located on the shores of Hunter Bay, a sensitive body of water along the east side of Lopez Island that is noted for its critical salmon forage fish habitat. Donated by Miles and Lola O'Neal, this conservation easement prohibits any development while permanently protecting mature native forest, coastal wetlands, a unique fern/bolder community, and critical tidelands habitat.

Acres: 6  
Shoreline: 691  
Residences allowed: 1 (existing)

**8** HENRY ISLAND ISTHMUS (*Henry*)



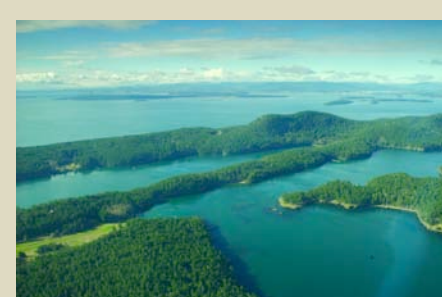
This 21-acre salt-marsh isthmus, which forms the crossbar of the distinctive "H" shape of Henry

Island, is home to an abundance of wildlife and native plant communities. As a natural system, the area features both high quality and high diversity, including a shallow mud-bottomed bay, an inter-tidal zone, a coastal beach, salt-grass meadows, and natural dunes. The rare accretion beach on Nelson Bay has been identified as one of the most important habitat sites of this type in Washington State.

The acquisition of a conservation easement on this property represents the final stage of a project initiated in 2003, when the Preservation Trust and the San Juan County Land Bank raised \$950,000 to acquire the adjacent 21-acre Mosquito Pass Preserve.

Acres: 21  
Shoreline: 4,025 feet  
Residences allowed: 0

**9** REID HARBOR PRESERVE ADDITION (*Stuart*)

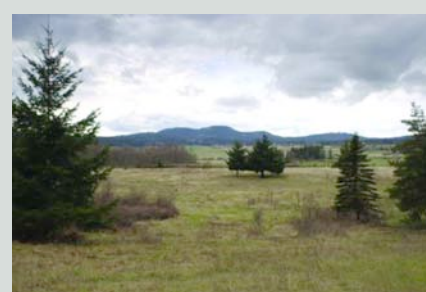


Responding quickly to notice that a 4-acre waterfront parcel was for sale on Stuart Island's Reid Harbor, a group of

neighbors and friends rallied to raise funds necessary for the Preservation Trust to acquire this undeveloped parcel and fold it into our adjacent Reid Harbor Preserve. The combined properties form a 9-acre undeveloped shoreline conservation area within this popular harbor, advancing the Preservation Trust's long term interest in permanently protecting the natural treasures of this unique and isolated island.

Acres: 4  
Shoreline: 835  
Residences allowed: 0

**10** MURPHY HARRISON PROPERTY (*San Juan*)



To memorialize her parents, longtime San Juan Island residents William and Lavinia Murphy, Sharon Harrison donated this conservation

easement on her family's San Juan Valley farm before putting the property up for sale. The 25-acre Murphy farm forms part of the rural border of the scenic San Juan Valley Heritage Area, which was established in 2000 by San Juan County to encourage the protection of working farmland in this important valley. This conservation easement eliminates three development rights while protecting agricultural, forest and scenic values.

Acres: 25  
Shoreline: 0  
Residences allowed: 1 (existing) and 1 (future)

**11** JACK ISLAND



Once the location of a commercial fox farm, Jack Island is now an undeveloped 19-acre jewel located just east of the northern tip of Guemes

Island. To ensure its long-term stewardship, Jack was donated to the Preservation Trust by a visionary islander who originally purchased the island to thwart the plans of an ambitious condominium developer. The Nature Conservancy will hold a conservation easement on the island, creating a conservation partnership to care for this island in perpetuity (our first challenge: addressing a serious English ivy infestation throughout the interior forest).

Acres: 19  
Shoreline: 4,143  
Residences allowed: 0